

## Smart Wheels

### Auto Car Wash-Wheel Clean

#### Product Description:

**AQUASHINE SMART WHEELS** is a concentrated blend of organic salt acids and powerful surfactants formula designed to quickly remove atmospheric corrosion, road grime, and soils from all aluminium surfaces. Commonly it is used to deoxidise and brighten transport vans, boat hulls, aluminium sidings, and road tankers. Smart Wheels works quickly to restore the original lustre to the metal; it can also be used to brighten mag wheels

#### Features/Benefits:

- Fast wetting speeds up soil removal
- Removes rust
- Contains acid stable foam surfactants
- Dissolves brake dust
- Brightens metal
- Free Rinsing

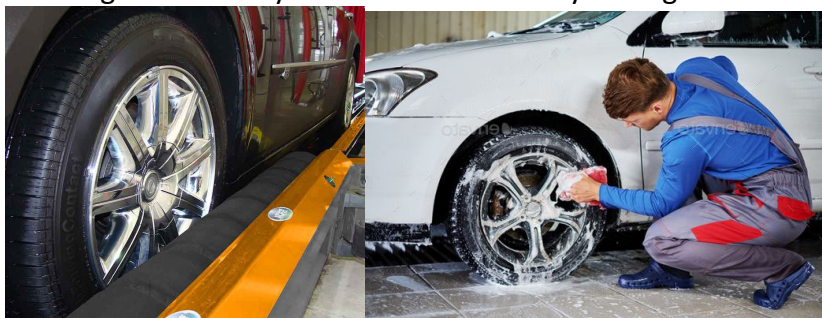
#### Application:

**AQUASHINE WHEEL BRITE** will remove brake dust and grime from wheels on all types of vehicles, cars, trucks, Busses locomotives etc. Safe on all metals and will not damage alloys, glass or paint, when dilution rates, dwell time & rinse well is followed. The highly concentrated formula is optimized for quick penetration of both oily films and brake dust "matrix" in a "one hit" cleaning operation.

**ALLOW MAXIMUM 30 SECONDS ONLY DWELL TIME & RINSE WELL**

#### Recommended Dilution Rate:

- 4:1 up to 20:1 dilution for general routine wheel cleaning as a pre-clean prior to entering the auto bay or within the auto bay through the wheel clean program.



Code: 44149

**SHELF LIFE:** As a quality assured manufacturer, Castle Chemicals has a stringent Quality assurance programme. As part of this regime, the label on this product shows a batch number and date of manufacture. This product has a shelf life of 12 months from the label printed date of manufacture. This information contained herein is based on data considered accurate. However, no warranty is expressed or implied regarding the accuracy of these data or the results to be obtained from the use thereof. Castle Chemicals assumes no responsibility for personal injury or property damage to vendees, users or third parties caused by the material. Such vendees or users assume all risks associated with the use of material.

**CASTLE CHEMICALS**

Page 1 of 1